

Products /  **CASTALDI** / TELLUX D44 / D44 TELLUX/T2 / D44K/T2HP-1LWN-WS

## TELLUX D44 D44K/T2HP-1LWN-WS

### TECHNICAL DATA

#### GENERAL



Item code	D44K/T2HP-1LWN-WS
Place installation	outdoor
Name	D44 TELLUX/T2 / D44K/T2HP-1LWN-WS ground recessed
Note	COB Chip On Board LED. DALI version on request.
Standard colour	stainless steel frame sandblasted
Environments	urban landscape, façades and architectural works, hallway, residential lighting



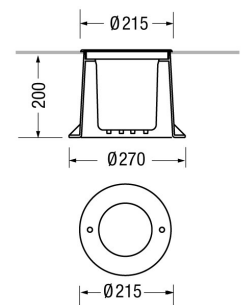
#### PHYSICAL

Installation type	ground recessed
Mounting type	with rough-in housing
Painting	Polyester powder coating, with a pluri-processed against corrosion (passed the exposure of over 1500 hours in a saline mist environment).
Screws	AISI 304 stainless steel screws.
Seals	Silicone Rubber.
Temperature glass	50°C
Static load	3500Kg
Body	Corrosion resistant die-cast aluminium body. High impact resistant composite technopolymer housing box. AISI 316 stainless steel frame sandblasted.



#### DIMENSIONS

D: Total diameter device (mm)	215
Built-in shaped	Round
Diameter built-in (mm)	270
Built-in depth (mm)	200
Weight (kg)	4
Volume piece packed (m3)	0,018



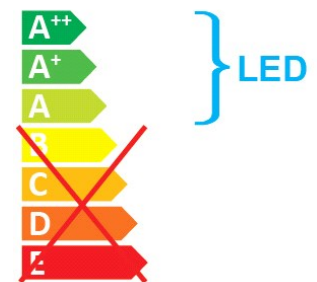
## OPTICAL SYSTEMS

Opening beam	wall washer
Tilt	Fixed optic
Optical System	PC with aluminium coating reflector.
Diffuser	Tempered safety glass - 10 mm thickness, mechanical and thermal shock resistant.



## ENERGY SAVING

This luminaire contains built-in LED lamps  
The lamps cannot be changed in the luminaire



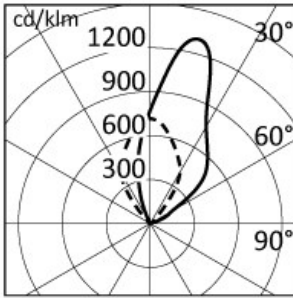
## SOURCES

Source Type	Source Power	System Power	Source	Lamp Socket	Sources Temperature Colour	Nominal Flux	Output Flux	MacAdam
LED COB	-	28W	-	-	4000K CRI>80	-	2541 lm	Step 3

## ELECTRICAL

Ballast type	Electronic.
Mounting ballast type	Integral
Lifetime	50.000h L80B10 (Ta=25°C)
Line input	Pre-wired and tested with resin sealed watertight H07RN-F cable (for a fast and secure connection to the main power line, use ACS/CR1 connector or similar).
Voltage	220-240V
Frequency	50-60Hz

## PHOTOMETRICS



h (m)	Ø (m)	--- γ=0.0 α=63°	Ø (m)	--- γ=0.0 β=53.7+12.4°	Emed(k)
5.00	6.08		7.91		37
4.00	4.86		6.32		58
3.00	3.65		4.74		103
2.00	2.43		3.16		232
1.00	1.22		1.58		927

## NORMS / DIRECTIVES

Norms	EN 60598-1, EN 60598-2-13
Directives	2014/35/UE, 2014/30/UE

## ACCESSORIES

## OPTIONAL ACCESSORIES

### Electrical

**Accessory code** ACS/CR1

**Technical description**  
Fast IP68 connector 1bar (10m-1h) for cable Ø7-12mm - 3x1.5mm.



**Accessory code** ACS/CR6

**Technical description**  
4 ways IP68 wiring box for cable Ø5-14mm - 3x1,5mm.

